

## EFFECTIVE, SAFE, REMOTE DUST SUPPRESSION AND CONTAMINATION CONTROL



Able to spray Surfactants, Wetting Agents, Fixatives, and plain water ALL from the same machine, without changing, or clogging 'nozzles'. Easy, end of the day "lockdown" of debris piles.

### ENGINEERING DESIGN & FABRICATION

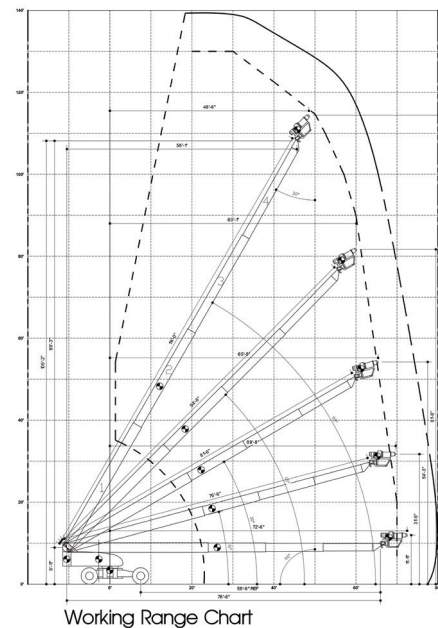
ADND provides specialized Professional Engineers (PE's) and SMEs with experience in the following:

- Structural Assessments to guard against premature collapse
- Demolition Work Instruction Plans and Detailed Execution Plans
- OSHA Pre-Demolition Engineering Surveys
- Design of Specialty Demolition Equipment, Attachments, and Tooling for unique applications.
- Design of Specialty Aerial Dust Suppression Systems (Turbine High Lifts).
- Design, development and implementation for Demolition Means and Methods of unique radiologically contaminated structures, systems, and components.
- 'De'-Construction Management for CONTROLLED IMPLOSIONS in Nuke Rated facilities.

**It's no accident your project is performed safely when you hire American DND. Experience where it matters most: planning, design, execution!**

### For more information contact:

Bill Schaab                      Blake Schaab                      William Sundeen  
 bschaab@americandnd.com    blakes@americandnd.com    wsundeen@americandnd.com



## WORKING WHERE THE RUBBER MEETS THE ROAD

American DND is working with Oil Quick®, and Caterpillar (CAT®) Equipment to deploy Cutting-Edge Technologies and innovations as SAFER methods of performing radiological / nuclear decommissionings and demolitions (D&D) that substantially reduce hours at risk and protect both the workforce and the environment. The OilQuick® system along with CAT® Products and American DND's proprietary THL Dust Suppression system are proven contributors to American DND's Safety achievement of working over 750,000 man-hours with a ZERO OSHA Safety rating over the past 21 years while performing open-air radiological demolitions with radiological (alpha, beta, gamma), and environmental constituents at numerous sites across North America.

The following pages provide a brief introduction to these modern technologies and products. Please visit their websites or call for more information. Products will be on display at the Waste Management Symposia 2025 [www.wmsym.org] at **Booth 401**.



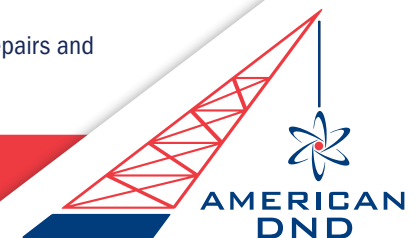
### WORKFORCE TRAINING

- Provides training for transitioning the existing workforce from an operating facility, through the decommissioning process and to full scale demolition operations.
- Teams with Caterpillar to provide Heavy Equipment Operator Training (both Classroom & Hands-On) and Mechanics Training for maintaining the specialized demolition heavy equipment and attachments.
- Establish relationships with various, local, in-house Unions and Building Trade Unions to develop a cohesive working relationship by supporting apprenticeship training, and long-term stewardship for workforce development as former facilities are transitioned back to commercial viability in the communities where they are located.



### EQUIPMENT RENTAL FLEET

- We have a National Fleet of Specialty Demolition Equipment with HEPA filtration in positively pressurized CABS and Point-Source Dust Suppression at the Work Tool.
- Ultra-High Demolition (UHD) Excavators from 60' to 150' high (+), while carrying Work Tools (Attachments) from 3 tons up to 20 tons.
- Excavators, Material Handlers, Loaders, Dump Trucks, and others from 12 - 200 tons
- Proprietary, purpose designed, and custom built "Turbine High Lifts" (THL's) to provide an overhead atomized mist for contamination control.
- Rental or Specialty Demolition Equipment either with, or without Operators.
- Both classroom and hands-on training for Heavy Equipment Operators and Maintenance Mechanics in HCA's, CA's, and RBA's.
- Design of Specialty Hand Tools to facilitate equipment repairs and reduce pinch points.





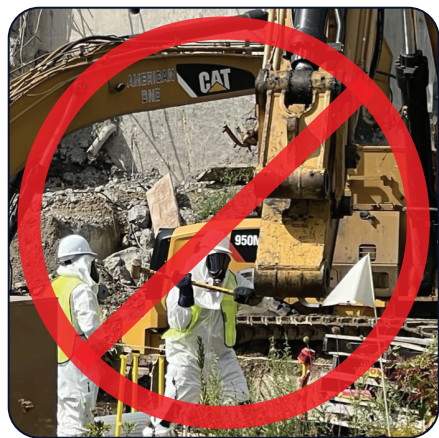
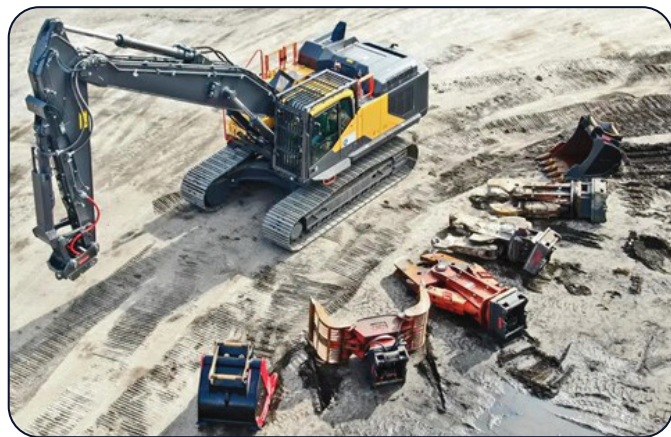
WORKS WITH OILQUICK®

WORKS WITH CAT®



Any Machine. Any Attachment. Anytime.

OilQuick automatic quick coupler system allows attachments to be connected and disconnected from the driver's cab within seconds.



CHANGE ANY ATTACHMENT  
IN SECONDS

OLD School = 3 people; 3 hours

**SAFER** Way = 1 person; Seconds

[www.OilQuickAmericas.com](http://www.OilQuickAmericas.com)

Manufactured in the USA

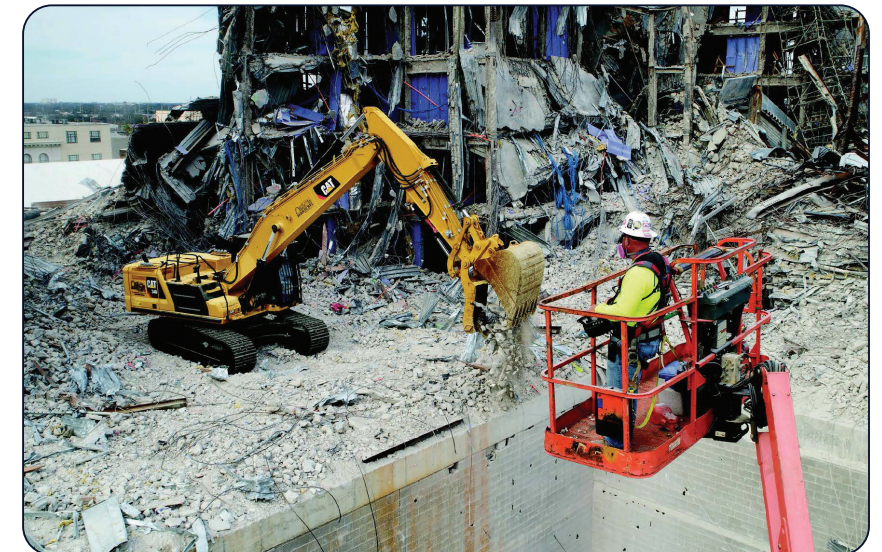


### 1. REMOTE CONTROL CONSOLE

LINE-OF-SIGHT OPERATION

Portable, lightweight system allows the user to work outside of the cab while remaining on site and in direct visual contact with the machine.

- + Ideal for short-term and emergency use.
- + Requires no on-site communications infrastructure.



### 2. REMOTE OPERATING STATION

NON-LINE-OF-SIGHT OPERATION

Enables the operator to work remotely in a seated indoor "virtual cab" located on site or many miles away.

- + Helps reduce operator fatigue with a comfortable working environment.
- + High quality video delivers a clear view of the work area.



Command Center  
On-Site or Off-Site



[www.cat.com](http://www.cat.com)

866-699-5515

[www.AmericanDND.com](http://www.AmericanDND.com)

